



The Florida Department of Transportation (FDOT) is continuing its efforts to provide high-quality, high-capacity transit service on an east-west axis in central Broward County. After conducting an alternatives analysis, the Broward MPO identified and endorsed a Locally Preferred Alternative (LPA) to serve the central Broward area. The LPA would improve east-west mobility and improve accessibility to two of the largest employment centers in Broward County, as well as other major activity centers.



Public participation is solicited without regard to race, color, national origin, age, sex, religion, disability or family status.

**EN ESPAÑOL**

Para recibir información sobre el proyecto o hacer una pregunta en español, por favor llame a nuestra línea de información 954.246.1248.

**AN KREYÒL**

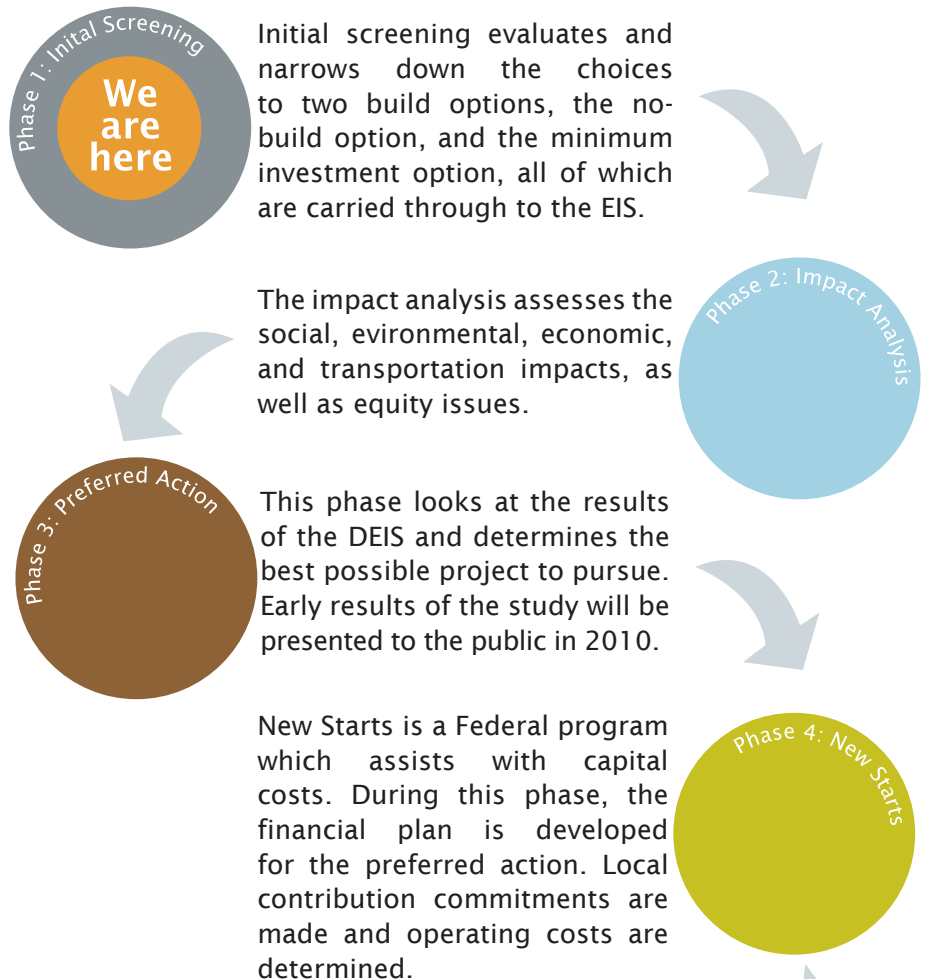
Pou resewa Pwojè Enfòmasyon ou byen pou-ou poze kesyon an Kreyòl, souple sonnen li'n Pwojè Enfòmasyon nan limeo 954.246.1249.

For general project information and many other frequently asked questions, or if you would like to ask more questions, speak to one of our team members or visit the website at:

[www.CentralBrowardTransit.com](http://www.CentralBrowardTransit.com)

# So, where are we in this process...

A Draft Environmental Impact Statement (EIS) will evaluate all reasonable alternatives for the project and discuss the reasons why other alternatives, which may have been considered, were eliminated. The draft EIS shall summarize the studies, reviews, consultations, and coordination required by environmental laws. The steps of the draft EIS are:



...and when will my concerns be addressed?

Many different topics will be addressed at various stages over the course of the project. These topics include the following:



### Phase 1: Initial Screening

Where will it go?  
Why are you looking at this area?  
What about other areas that need better transit service?

### Phase 2: Impact Analysis

What affects will this have on noise, air quality, and community amenities?  
What affects will this have to roads, traffic, and parking?  
How will this work with existing transit?  
What will it cost to construct and operate?  
Where will the stations be located, and what amenities will they have?  
How frequently will service run?  
How will this affect my property value?

### Phase 3: Preferred Action

Why was the preferred action (alternative) selected?  
Will service exist within residential areas?  
What are the impacts to neighborhoods?  
How will the negative effects be addressed?  
Will property purchases be needed and where?

### Phase 4: New Starts

How much the project will cost?  
How funding will be obtained?  
Who will fund it?  
When it will be funded?  
How much will it cost me personally?



### Topics addressed beyond the DEIS include:

Who is going to design and build the project?  
How much will fares be and what will the operating hours be?  
What commercial opportunities might exist at stations?  
How will the system operate for special events?

